

Dual DUO mechanism: New function allowing changing from a toggle to a push-button lever, with the same reference, using just a single press (e.g. with a screwdriver).

## 1 INSTRUCTIONS AND RECOMMENDATIONS



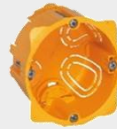
Switch off the mains before commencing any work



Strip the wires back for about 12mm  
Cable cross-section 0.5 min / 2.5mm<sup>2</sup> max



Mechanisms fitted with terminals with automatic connections



For single units, use casings 50mm deep,  
diameter 67 or 68mm

## 2 WIRING



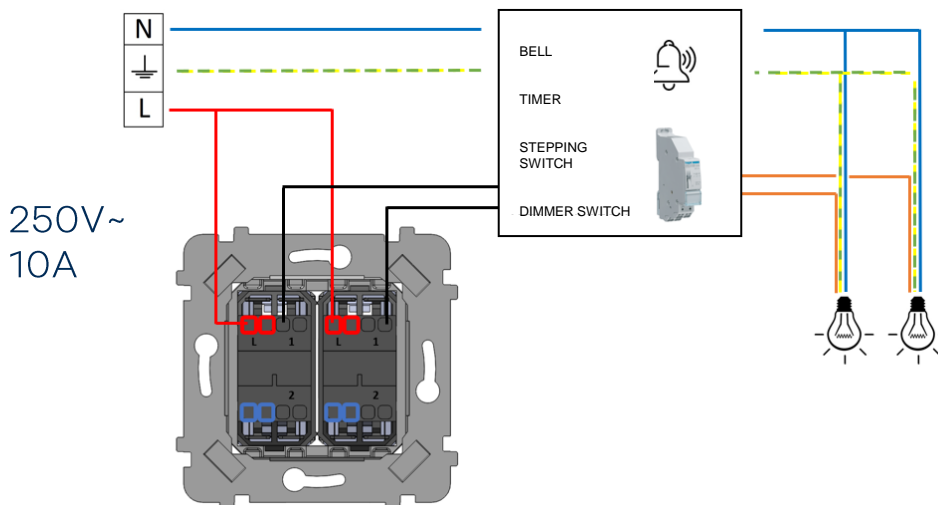
Installation by a person with the appropriate skills.

 **N** neutral – blue cable

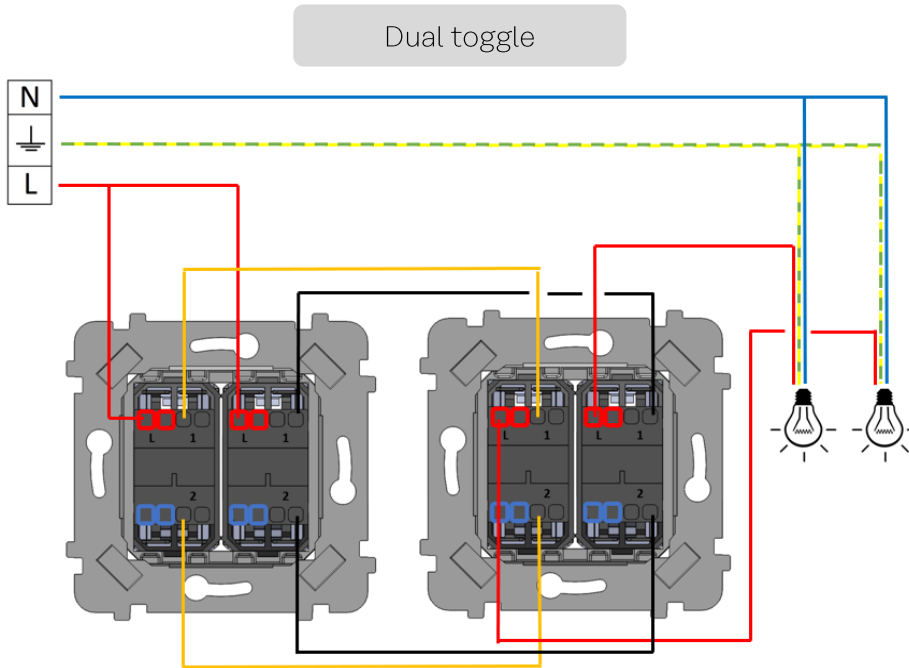
 **L** phase – red cable

  earth – green/yellow cable

Dual push-button + *Panel module*

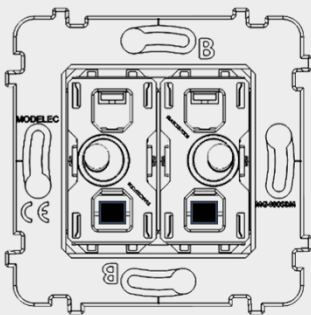


## 2 WIRING

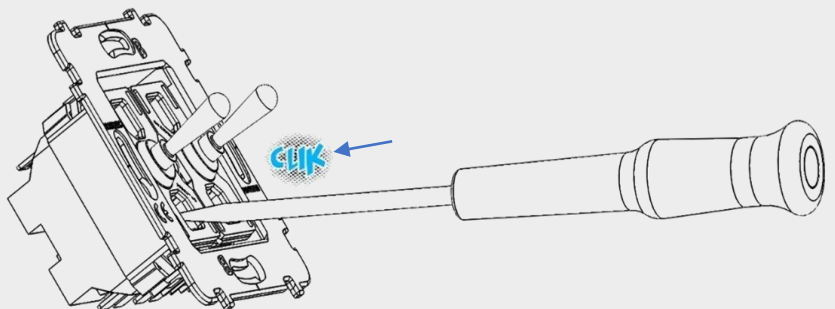


## 3 CHANGING TOGGLE SWITCH TO PUSH-BUTTON

Take the dual toggle mechanism



Using a screwdriver, push the black squares until they click into place



This turns it into a dual push-button mechanism.



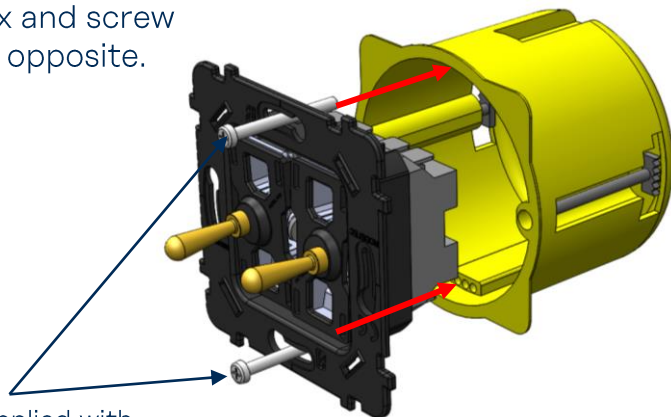
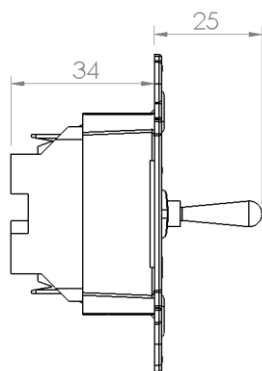
Reverse procedure for switching from push-button to toggle



**Note:** The buttons for the -M- collection are delivered unassembled. To access the "DUO" function described above, just clip them on after selecting the toggle or push-button function.

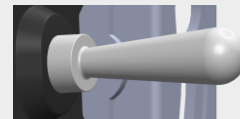
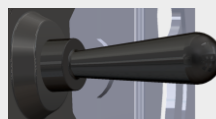
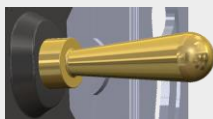
## 4 FITTING

After wiring according to the instructions, place the mechanism in the flush-mount box and screw on the plate according to the diagram opposite.



Screws supplied with the flush-mount box.

## 5 TABLE OF RELEVANT REFERENCES

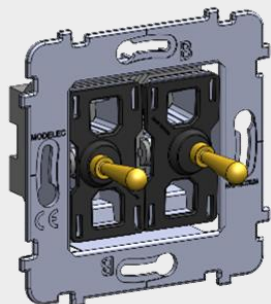


xx = **OR**  
GOLD

**AC**  
STEEL

**NO**  
BLACK

**BL**  
WHITE



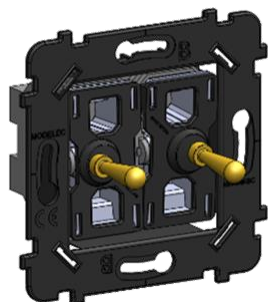
Reference and description:

087-020Gxx D DUO LEVER

Compatible with:

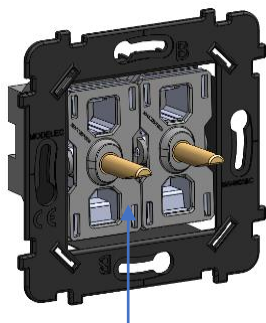
Confidence and Fascination Collection

## 5 TABLE OF RELEVANT REFERENCES



087-020Bxx D DUO LEVER

Désir and Karo Collection



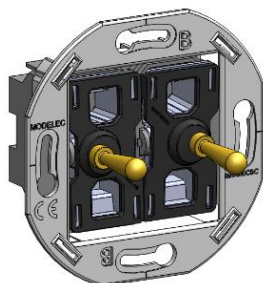
087-020BxxN S DUO LEVER HI SBLACK

087-020BxxB S DUO LEVER HI SWHITE

Hitera Collection

Black support (N) for 482/486/491/492 finishes

White support (B) for 481/485 finishes



087-020Wxx S DUO LEVER

Iris Collection

## 6 CERTIFICATIONS

DUO 087 mechanisms comply with IEC 60669-1:2017 EN 60669-1:2018.